

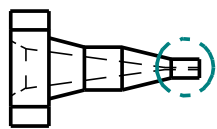


Orange County Instruments

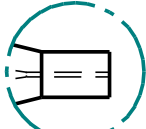
Contact Frank@ocinstruments.com
 760-840-1350
www.dispensetips.com

CERAMIC NOZZLES

Designed for Electronic and Semiconductor dispensing. Ideal for fluids such as Solder Paste, Silver filled adhesives, UV Resins, under fills, glob tops, and other materials. The advantages include: Very high quality and precision nozzle construction – particularly around the outlet port results in better quality and faster dispense. The conical design resulted in less clogging and lower pressure. The construction is zirconia (Ceramic) and is extremely resistant to wear and abrasions caused by filler in the fluids. The result is a life that can be 10X a stainless steel construction. Outlet port sizes down to 1 mil. The difference in the tip construction allows for a very affordable nozzle. Dispensing in close quarters may require thinner walls and semi blunt, precision and ultra precision options allow for expense to be spent only if required.



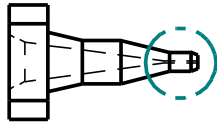
A



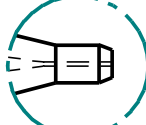
DETAIL A

BLUNT

Tip OD:
 .038" (0.96mm)



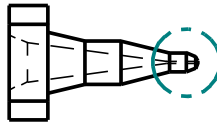
B



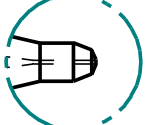
DETAIL B

SEMI BLUNT

Tip wall thickness:
 .005" (0.12mm)



C

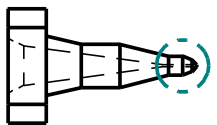


DETAIL C

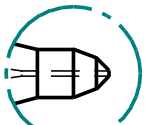
PRECISION

PRECISION - MICRO

Tip wall thickness:
 .001" (0.025mm)



D



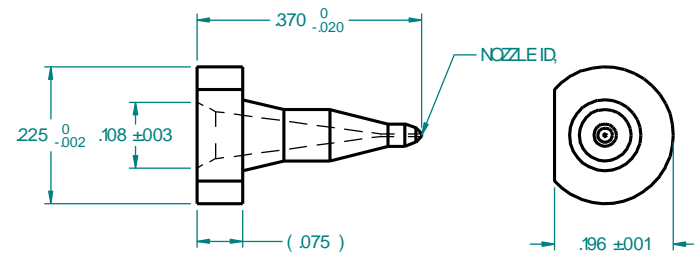
DETAIL D

ULTRA PRECISION

ULTRA PRECISION - MICRO

Tip wall thickness:
 .0005" (0.012mm)

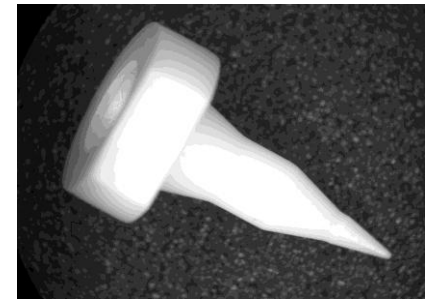
COMMON DIMENSIONS



SIZE		MOLDED NOZZLE AVAILABLE SIZES			
mm	inch	BLUNT	SEMI BLUNT	PRECISION	ULTRA PRECISION
0.100	0.004				
0.127	0.005				
0.150	0.006				
0.178	0.007				
0.200	0.008				
0.250	0.010				
0.300	0.012				
0.330	0.013				
0.400	0.016	↓	↓	↓	↓

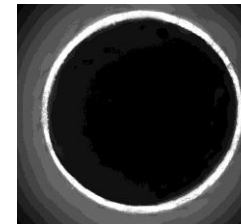
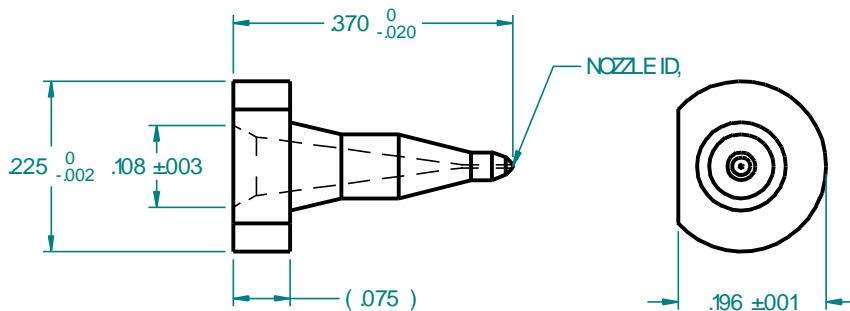
SIZE		MACHINED NOZZLE AVAILABLE SIZES	
mm	inch	PRECISION - MICRO	ULTRA PRECISION - MICRO
0.025	0.001		
0.050	0.002		
0.150	0.003	↓	↓

CUSTOM MICRO SIZES AVAILABLE ON REQUEST



CERAMIC NOZZLES

Designed for Electronic and Semiconductor dispensing. Ideal for fluids such as Solder Paste, Silver filled adhesives, UV Resins, under fills, glob tops, and other materials. The advantages include: Very high quality and precision nozzle construction – particularly around the outlet port results in better quality and faster dispense. The conical design resulted in less clogging and lower pressure. The construction is zirconia (Ceramic) and is extremely resistant to wear and abrasions caused by filler in the fluids. The result is a life that can be 10X a stainless steel construction. Outlet port sizes down to 1 mil. The difference in the tip construction allows for a very affordable nozzle. Dispensing in close quarters may require thinner walls and semi blunt, precision and ultra precision options allow for expense to be spent only if required.



ULTRA PRECISION TIP VIEW

Nozzle ID = $.004$ " (0.1mm)
 Tip wall thickness = $.0005$ " (12 μ)

